

The background of the entire page is an abstract artwork. It features a complex interplay of textures and geometric patterns. On the left, there are vertical, slightly wavy lines in shades of beige and light brown, resembling a close-up of wood grain or a textured wall. On the right, there are more pronounced, darker, and more complex patterns, including what looks like a woven fabric or a series of overlapping, slightly irregular lines in shades of grey and brown. The overall effect is one of depth and tactile quality.

ON THE TIGHTROPE

DOROTHY SMITH
SAHOKO BLAKE


GORMLEYS
FINE ART

Cover image
Dorothy Smith - Package (detail)

Back cover image
Sahoko Blake - Plaice (detail)

You are cordially invited to the opening of

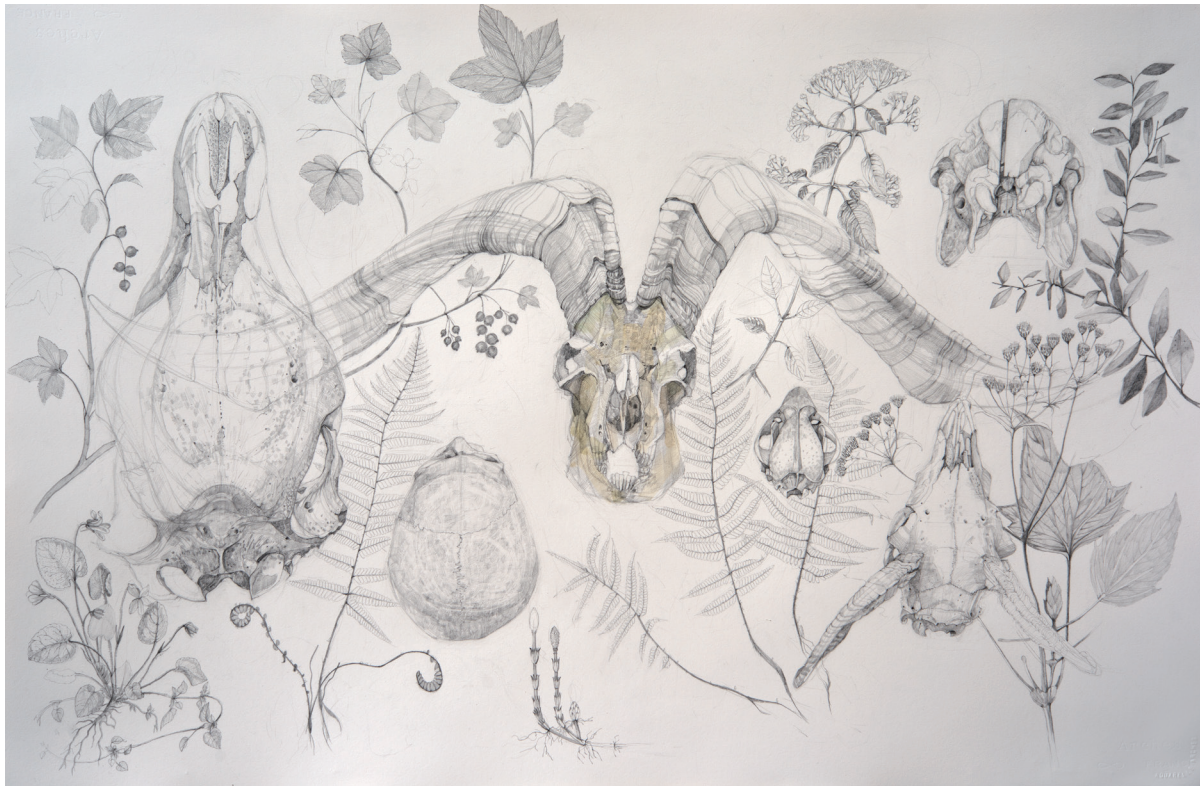
ON THE TIGHTROPE

Thursday 5th June

6:30 - 8:30pm

25 South Frederick Street, Dublin 2

The exhibition will run from 5th June - 28th June 2014. Open Mon - Sat 10am - 5.30pm
Complete exhibition can be viewed online at www.gormleys.ie



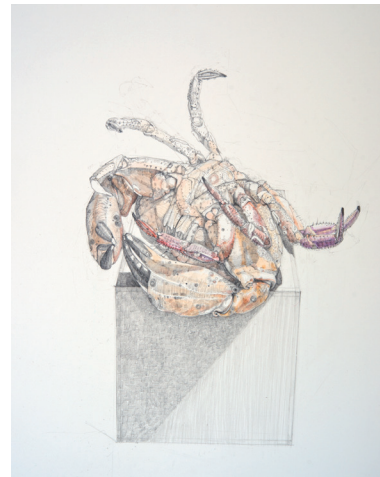
Land Life
101 x 68 cm
Pencil and watercolour on paper
Sahoko Blake



London Pig Smiles
24 x 18 cm
Pencil and watercolour on paper
Sahoko Blake



Goldfish and Artist
42 x 38 cm
Pencil on paper
Sahoko Blake



Easter Crab
40 x 38 cm
Pencil and watercolour on paper
Sahoko Blake

ON THE TIGHTROPE

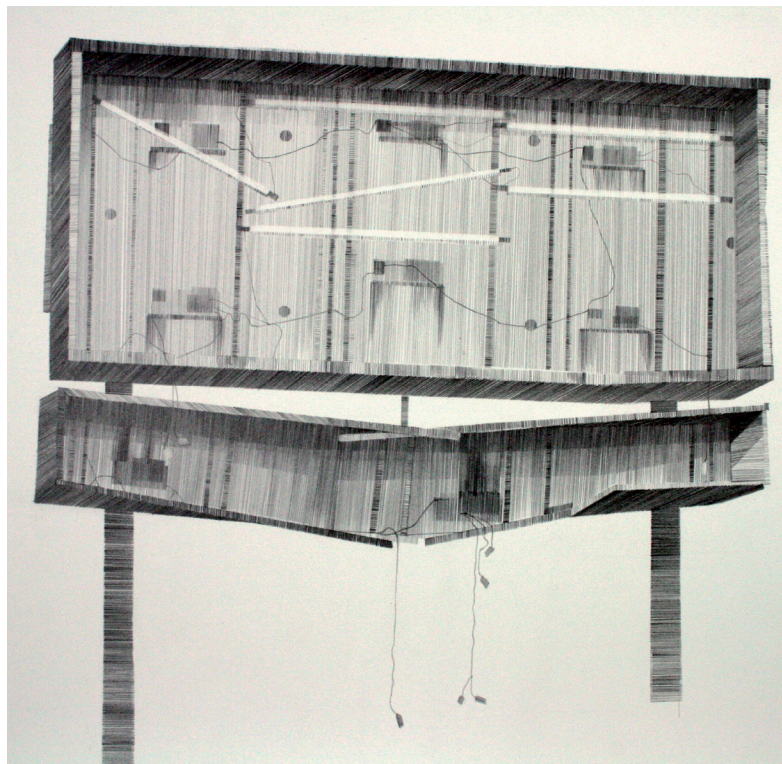
At a time when the definition of drawing is wide open, when any type of mark making is drawing by definition, it is refreshing to encounter the work of artists who have built up a significant body of individual, sophisticated and intelligent drawings, drawings that have been honed from years of careful observation of the world around them. Tentative inquiry, firm resolution, coupled with a thorough knowledge of past achievements by masters of the art, have brought the careers of Sahoko Blake and Dorothy Smith to their present level of accomplishment.

Sahoko Blake, originally from Tokyo has a distinguished career as an underwater camera woman, teacher and artist to her credit, she has been living in Ireland for the past twenty years, always beside the sea which competes with terra firma as her natural habitat. Her drawings of sea creatures and animal skulls have many of the characteristics of the drawings made by artists who accompanied the great explorers when seeking out new habitats, plants and animals. They are made in order to describe and understand as fully as possible. The images in these works have emerged, teased out carefully from the surface of the paper with the nuances and textures of the subject subtly and firmly realized. There is a sense of wonder in the encounter by the artist of her subject, she is amazed by what nature has presented to her for contemplation, her translations into drawings communicate that sense of wonder. We encounter highly tuned work, drawings that are made on the tightrope, demanding the full concentration of the artist whose considerable gifts bring her vision of the fabulous world that surrounds her directly to us.

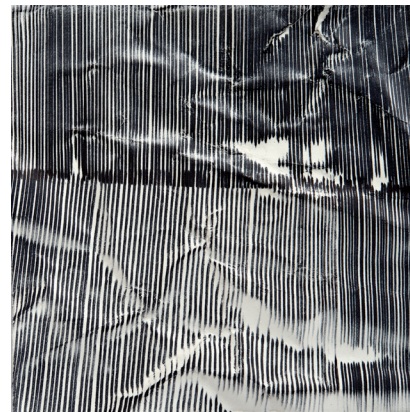
Dorothy Smith is an artist with a long established career in Ireland. She has been successfully involved in arts administration from the perspective of a trained artist before devoting herself full time to her art. She has organized exhibitions and events while participating in residencies and showing in many of the major national exhibitions. Her approach to drawing is analytical, she is fascinated by structure and construction. Apart from her ongoing exploration of the human form and the portrait, an area of activity that she shares with Blake, Smith has made a lifelong study of the built environment that she is exposed to everyday. Currently her attention is focused on her Dublin neighbourhood, in particular noticing spaces such as traffic islands; those places that offer sanctuary to the pedestrian as they negotiate our shared public space. She is drawn to the structures that people blur out, that stand forlorn, such as a derelict freestanding electric advertising board, the size of a building, just being there. In Smith's world, they step forward, while the more established street scape recedes. Smith knows that we are shaped by our environment and that we have developed highly sophisticated ways of editing what intrudes into our personal narrative. The language of drawing becomes the subject as well as the means of inquiry for Smith, her box drawings and thoughts on paper studies observe patterns and dislocations in line that are very beautiful and revealing. These are ground breaking works.

Blake and Smith met at the drawing sessions that were held at the RHA Studio back in 2000. Both artists were invited to partake in the formative drawing sessions with interested Academicians that led to the present stage in the revival of the Academy School. Many connections were forged at that time between artists who were passionate about drawing and what drawing can do. It is the great communicator, transcending language barriers and touching people deeply and profoundly. The Academy School continues to provide a forum for artists to meet and exchange ideas. Sahoko Blake and Dorothy Smith have been intrinsically linked to the school since it's formation, the idea for this exhibition has its genesis there, words can only say so much about drawing, the drawings presented by these two colleagues say a lot about us and our world because their authorship is by clearheaded observers and artists with insight.

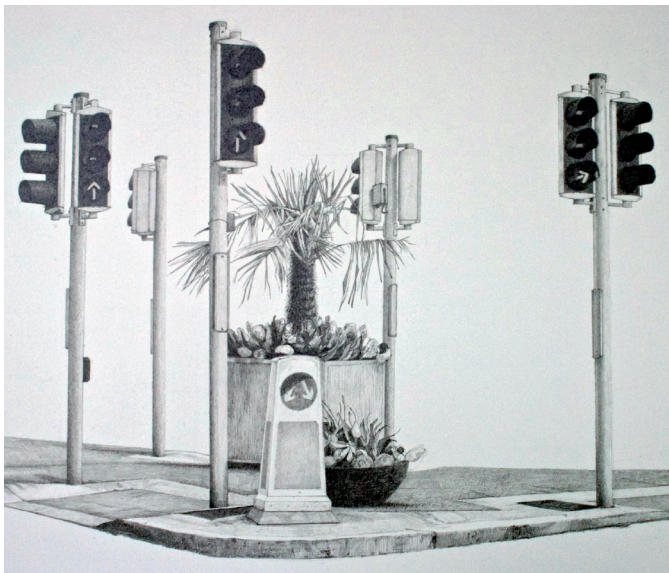
Mick O' Dea, RHA, Aosdána
Portacloy 2014



Modern World
38.5 x 38.5 cm
Pencil on paper
Dorothy Smith



Thoughts on Paper 1, 2 & 3
14 x 14 cm each
Pen on paper
Dorothy Smith

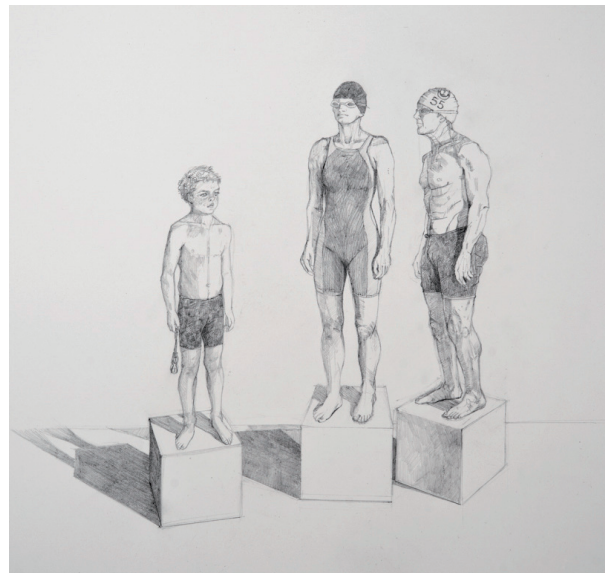


Island in Spring (detail)

76 x 56 cm

Pencil on paper

Dorothy Smith



Swimmers

28 x 26 cm

Pencil on paper

Sahoko Blake

DOROTHY SMITH

Dorothy Smith is a graduate of IADT (MA in Visual Arts Practices), NCAD (Degree Fine Art Painting) and UCD (Post Grad Diploma Arts Administration). She has exhibited widely in six solo exhibitions and in group shows in the Lab, the Royal Hibernian Academy, the Hallward Gallery and the Original Print Gallery, Dublin, The Bourne Vincent Gallery, University College Limerick, the Lavit Gallery, Cork, the Gerard Dillon Gallery and the Gormley Gallery, Dublin and Belfast, the Royal Ulster Academy and Grafiska Sallskapet, Stockholm. She is a recipient of the Taylor Bequest Award, has participated in the Boyle Arts Festival, Eigse, the Dublin International Print Festival and Cill Rialaig and Inislacken Residencies and is a member of the Blackchurch Print Studio.

She has worked with many community based organisations as a manager, facilitator and teacher. Her work is in the collections of The Office of Public Works, The Irish Contemporary Arts Society, NIVAL, the New York Public Library Print Collection, AXA and private collections.



Drawing by Mick O'Dea 2005

SAHOKO BLAKE

Sahoko Kasuga Blake was born in Tokyo, graduating from Tamagawa Gakuen University there in 1991 with a degree in Fine Art & Art Literature. She traveled to Ireland, and married 1996. Since then has exhibited extensively here and abroad, including three solo show in 2003, 05, 07 and has been an invited artist at shows such as the Boyle Arts Festival, Eigse, the Royal Hibernian Academy Banquet & RHA studio residency.

Her works has been selected for Cheltenham Work on Paper, Millennium Collections in Holland, the Royal Ulster Academy and the RHA annual exhibitions.

Sahoko is a tutor on advanced drawing courses at the National Gallery of Ireland since 2007 as well as life drawing classes in Alexandra College, Sallynoggin College and RHA. She lives & works in Co. Wicklow.

25 South Frederick Street
Dublin 2
Tel: +353 (0) 1 6729031

251 Lisburn Road
Belfast, BT9 7EN
Tel: +44 (0) 28 90 663313

3-4 Dromore Road
Omagh, BT78 1RE
Tel: +44 (0) 28 82 247738

www.gormleys.ie
info@gormleys.ie


GORMLEYS
FINE ART